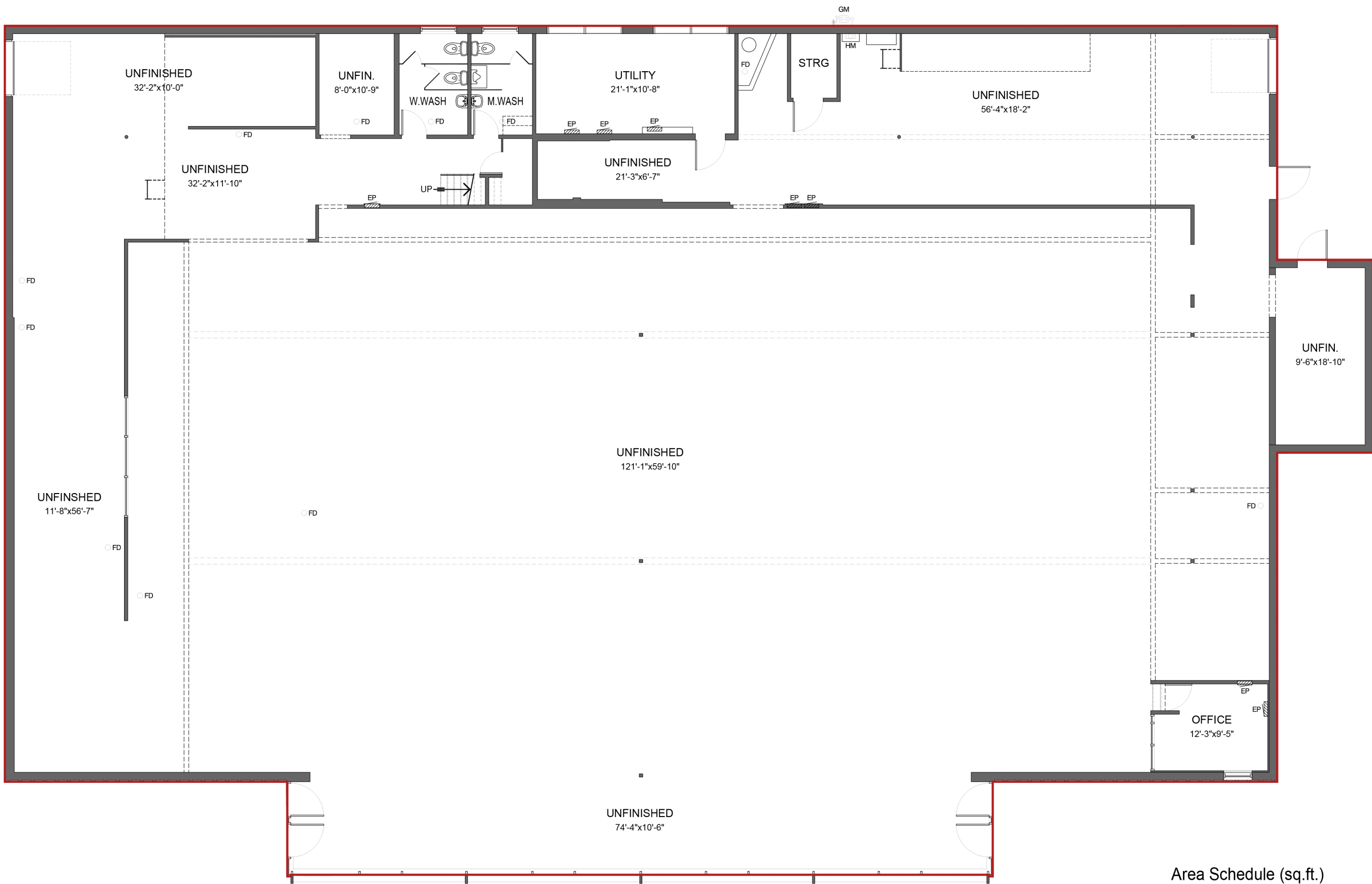


EXISTING CONDITIONS

EIGHTH STREET

LIST OF DRAWINGS

- 1.1 MAIN FLOOR PLAN
- 1.2 SECOND FLOOR PLAN
- 2.1 MAIN FLOOR POINT CLOUD
- 2.2 SECOND FLOOR POINT CLOUD
- 3.1 SECTION POINT CLOUD

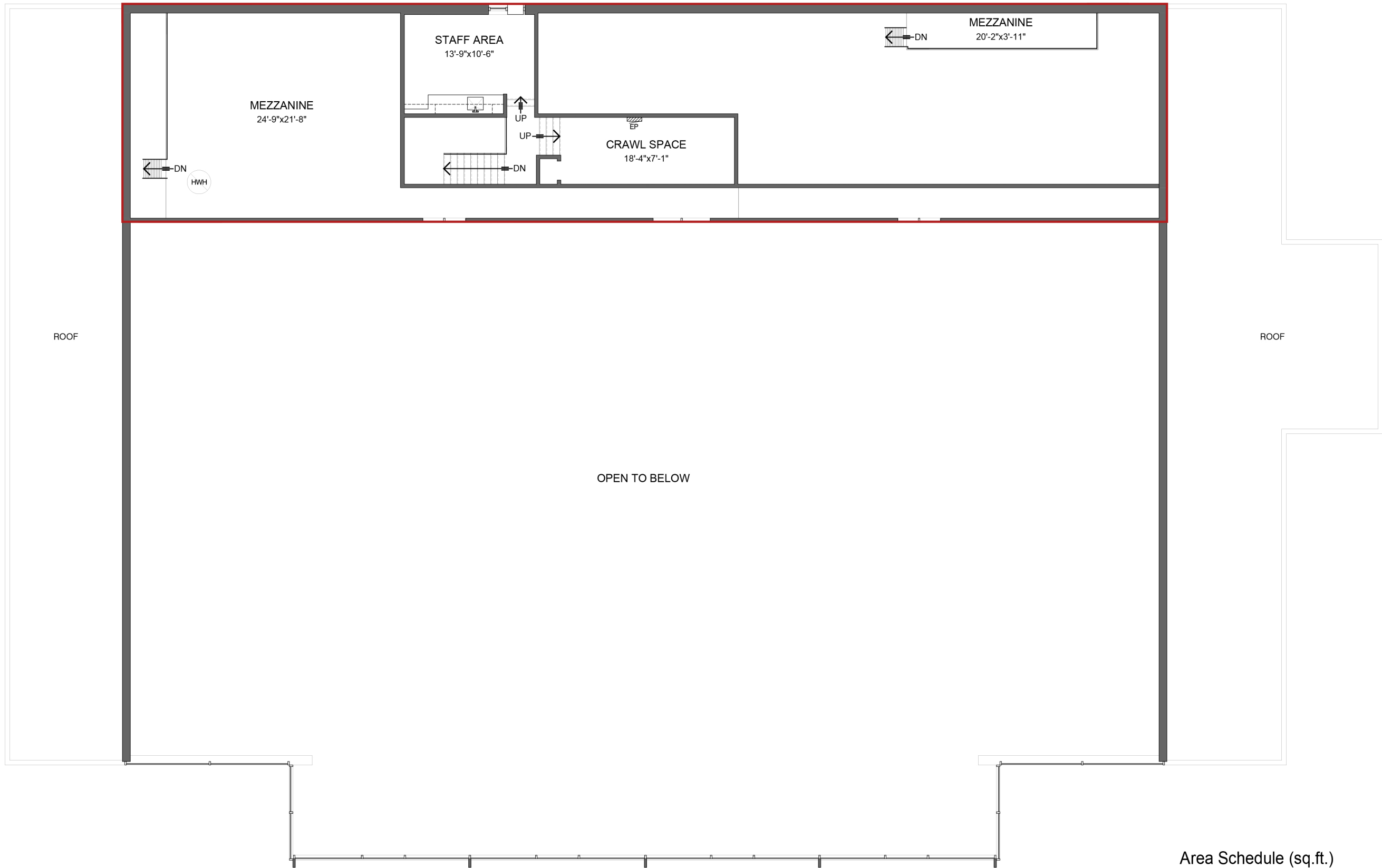


Area Schedule (sq.ft.)	
Main Floor Plan	11771.65
Total Gross Floor Area	14297.07

[CLICK TO TOUR](#)

Do not scale drawings. Contractors must check and verify all dimensions and report any discrepancies to Mapply before proceeding with any work. All documents remain the property of Mapply. Unauthorized use, modification, and/or reproduction of these documents is prohibited without written permission. The material contained herein reflects the Consultant's best judgment in light of the information available at the time of preparation. Any use which a third party makes of the documents, or any reliance on or decisions to be made based on them are the responsibility of such third parties. The Consultant accepts no responsibility for damages, if any, suffered by any third party as a result of decisions made or actions based on the documents.

Do not scale drawings. Contractors must check and verify all dimensions and report any discrepancies to Mapply before proceeding with any work. All documents remain the property of Mapply. Unauthorized use, modification, and/or reproduction of these documents is prohibited without written permission. The material contained herein reflects the Consultant's best judgment in light of the information available at the time of preparation. Any use which a third party makes of the documents, or any reliance on or decisions to be made based on them are the responsibility of such third parties. The Consultant accepts no responsibility for damages, if any, suffered by any third party as a result of decisions made or actions based on the documents.



Area Schedule (sq.ft.)	
Second Floor Plan	2525.42
Total Gross Floor Area	14297.07

[CLICK TO TOUR](#)

Do not scale drawings. Contractors must check and verify all dimensions and report any discrepancies to Mapply before proceeding with any work. All documents remain the property of Mapply. Unauthorized use, modification, and/or reproduction of these documents is prohibited without written permission. The material contained herein reflects the Consultant's best judgment in light of the information available at the time of preparation. Any use which a third party makes of the documents, or any reliance on or decisions to be made based on them are the responsibility of such third parties. The Consultant accepts no responsibility for damages, if any, suffered by any third party as a result of decisions made or actions based on the documents.



Do not scale drawings. Contractors must check and verify all dimensions and report any discrepancies to Mapply before proceeding with any work. All documents remain the property of Mapply. Unauthorized use, modification, and/or reproduction of these documents is prohibited without written permission. The material contained herein reflects the Consultant's best judgment in light of the information available at the time of preparation. Any use which a third party makes of the documents, or any reliance on or decisions to be made based on them are the responsibility of such third parties. The Consultant accepts no responsibility for damages, if any, suffered by any third party as a result of decisions made or actions based on the documents.

